



Team Presentation

-Structured Design

TEAM [T4]

노은방	200811428
김상민	200910044
박수민	201111353
한별	201214217

Contents of presentation

❖ Structured Design

- Implementation Model.

지하철

- Structured Chart – Transform Analysis
- Structured Chart – PTS (Basic)
- Structured Chart – PTS (Advanced)

버스

- Structured Chart – Transform Analysis
- Structured Chart – PTS (Basic)
- Structured Chart – PTS (Advanced)

정산

- Structured Chart – Transform Analysis
- Structured Chart – PTS (Basic)
- Structured Chart – PTS (Advanced)

The Goals Of Presentation

1

To grasp the structure of overall PTS flow.

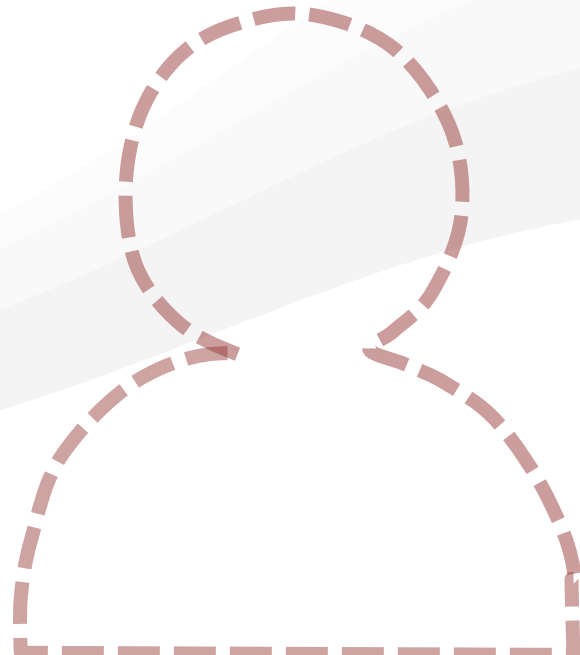
2

Let us understand about interrelationship of each part.

3

By applying SASD technique to PTS,
It establishes a foothold to develop the system

Let's see What to do

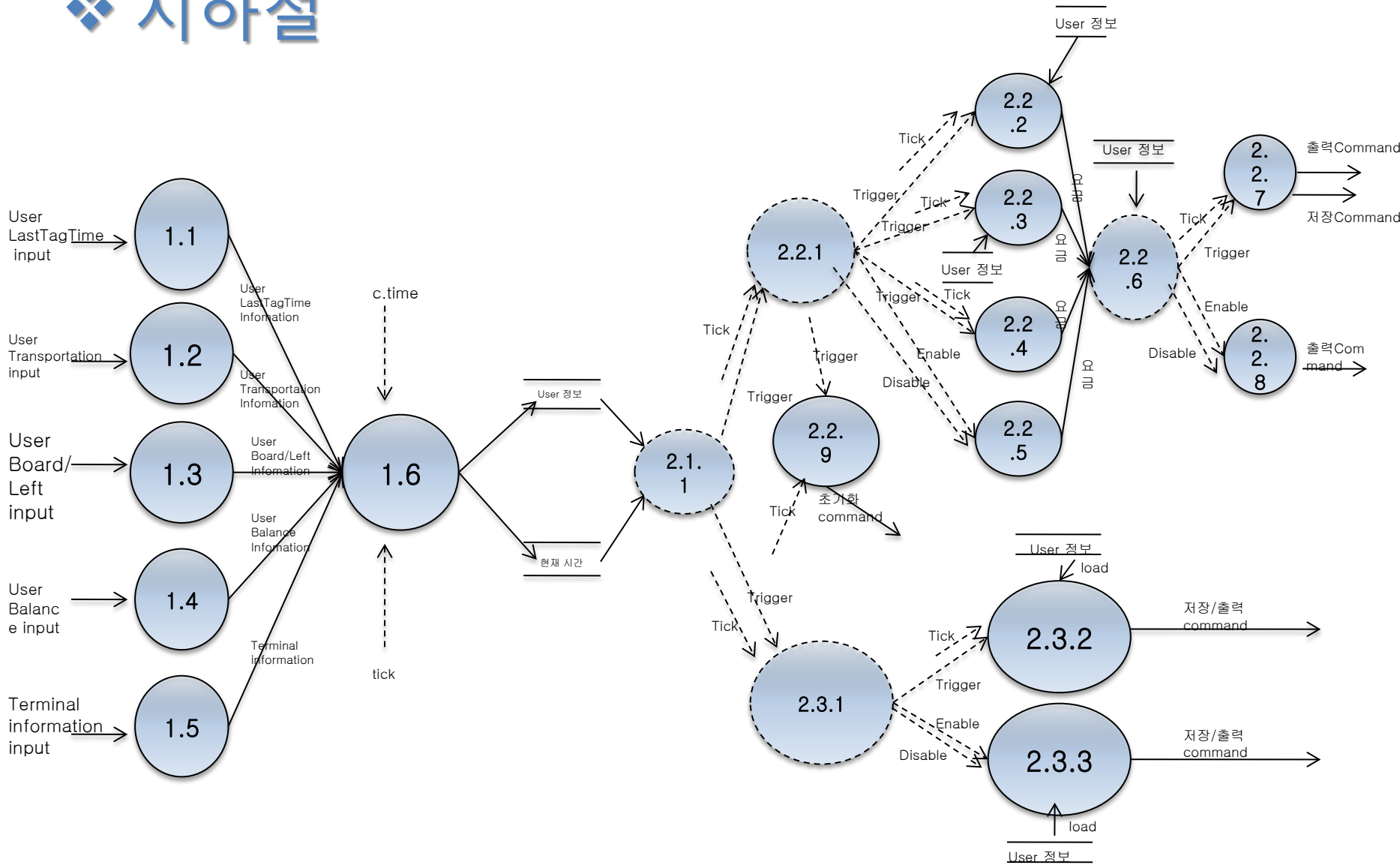


IMPLEMENTATION MODEL



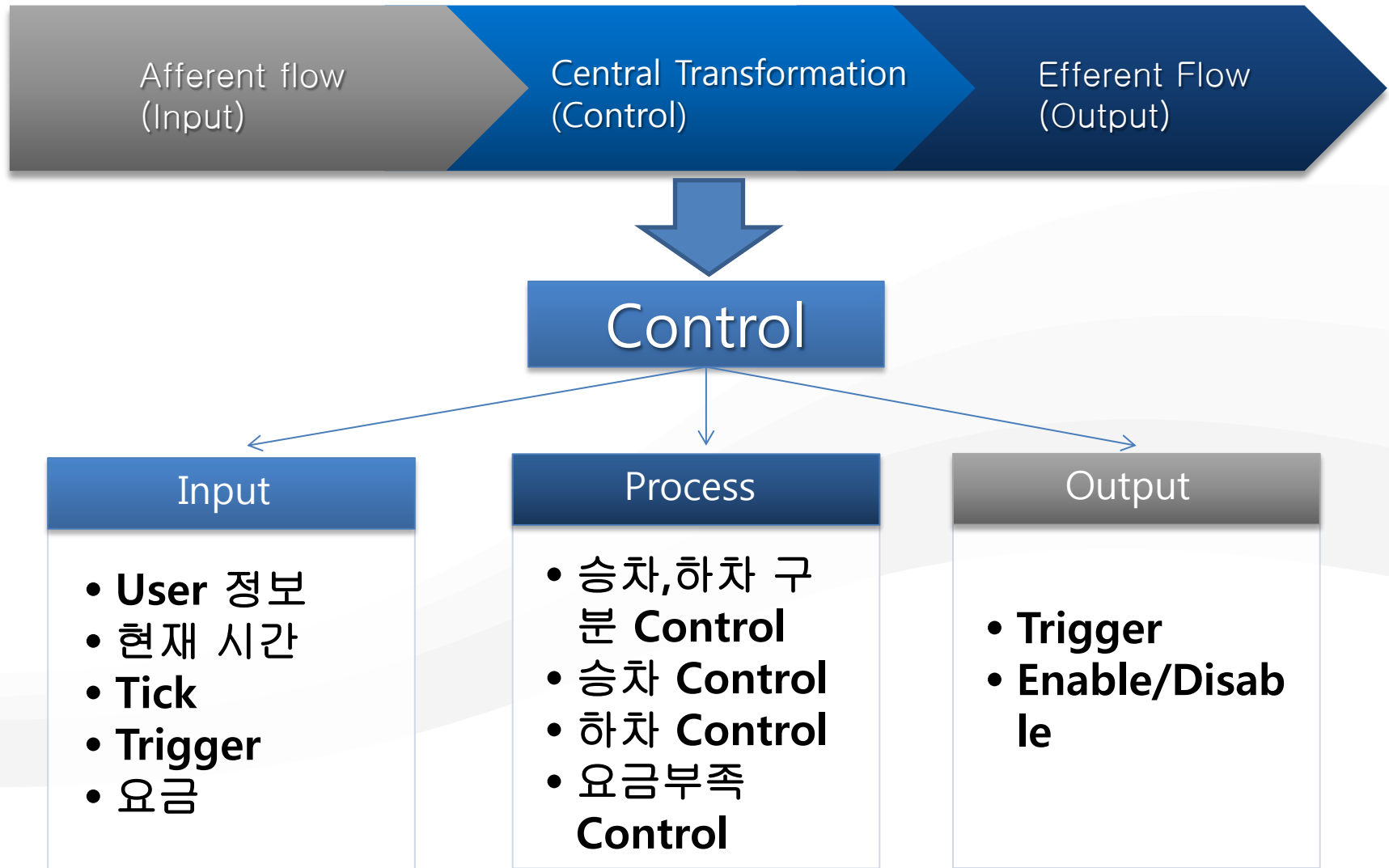
Structured Chart – Transform Analysis

❖ 지하철



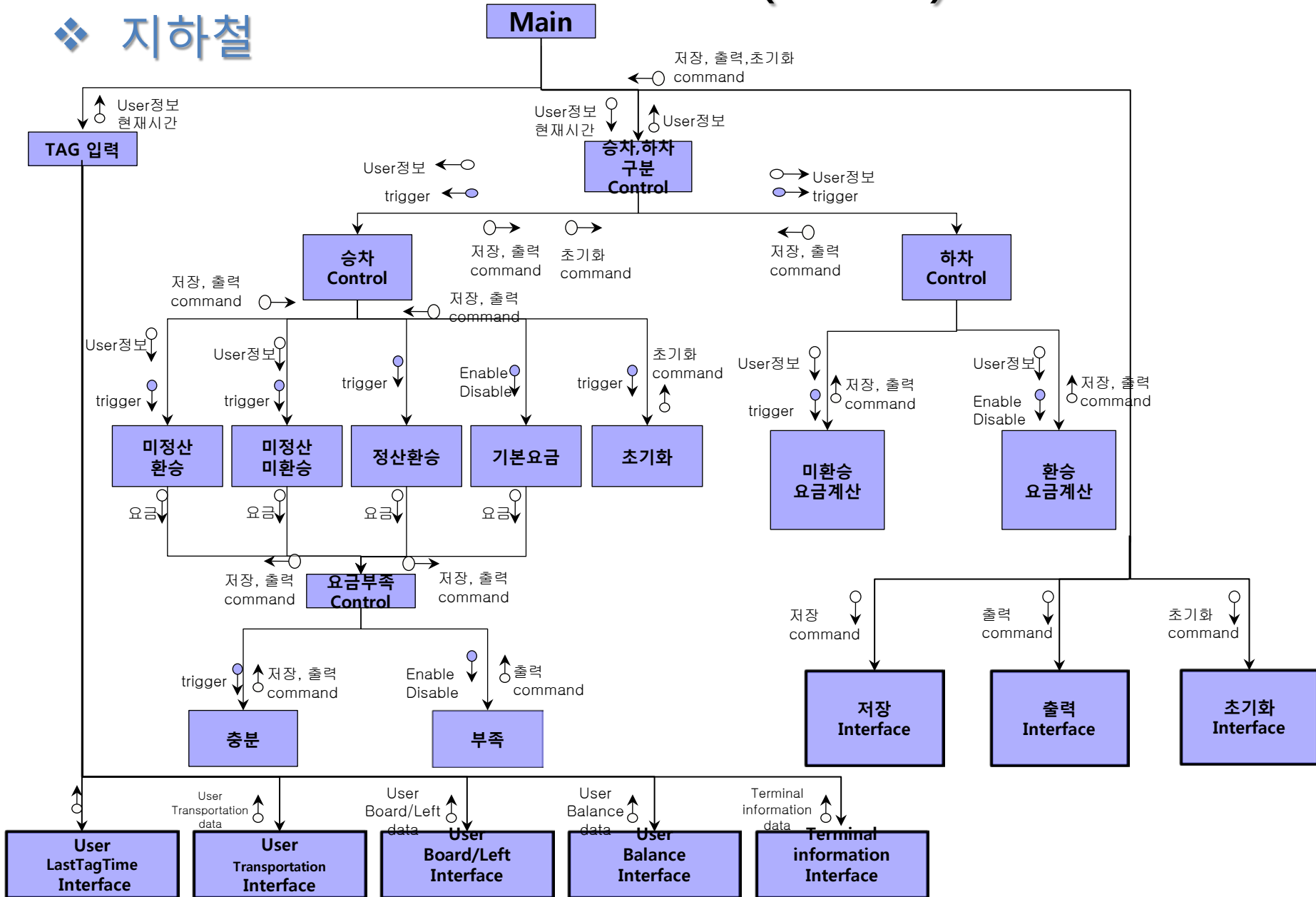
Structured Chart – Transform Analysis

❖ 지하철



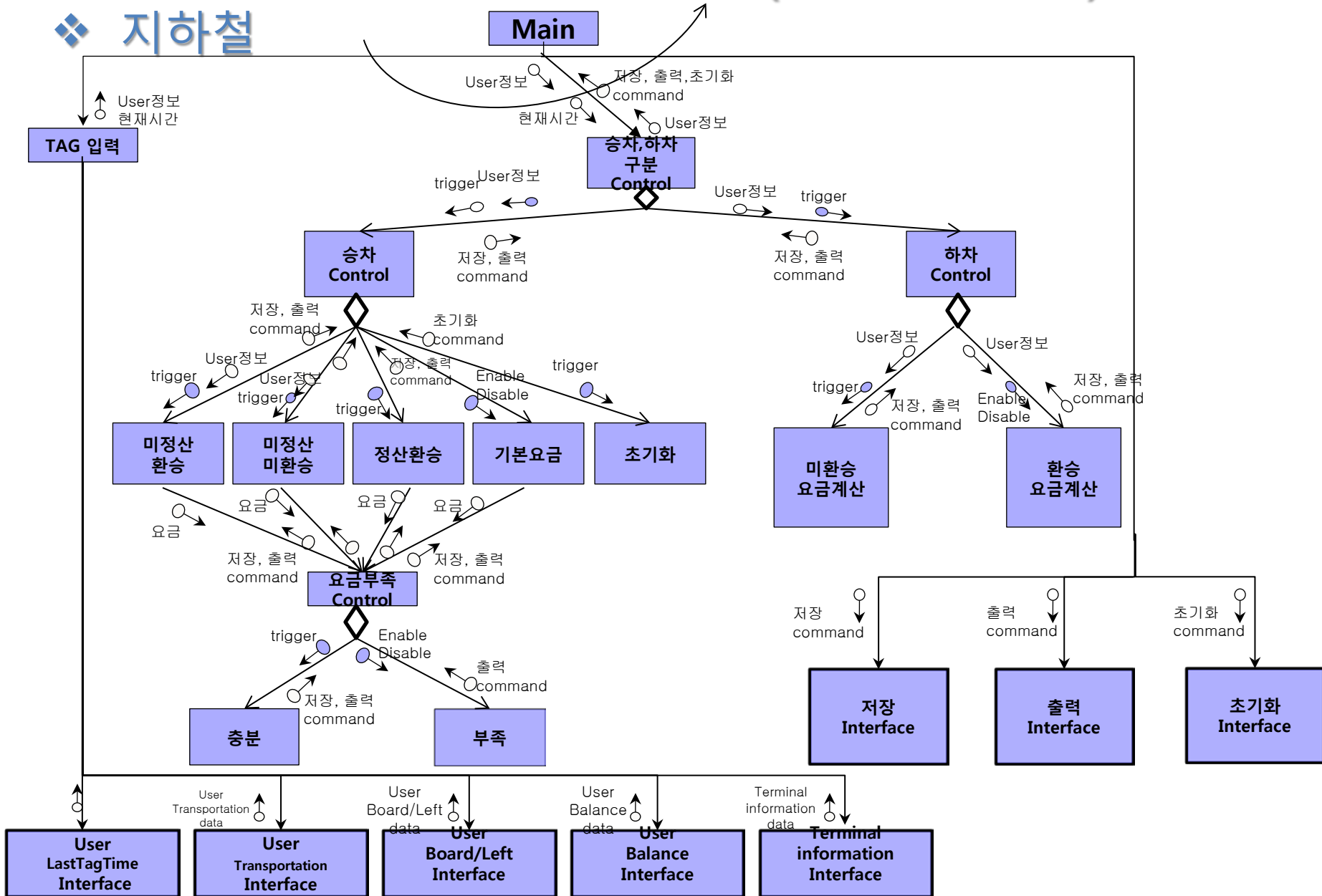
Structured Chart – PTS (Basic)

지하철

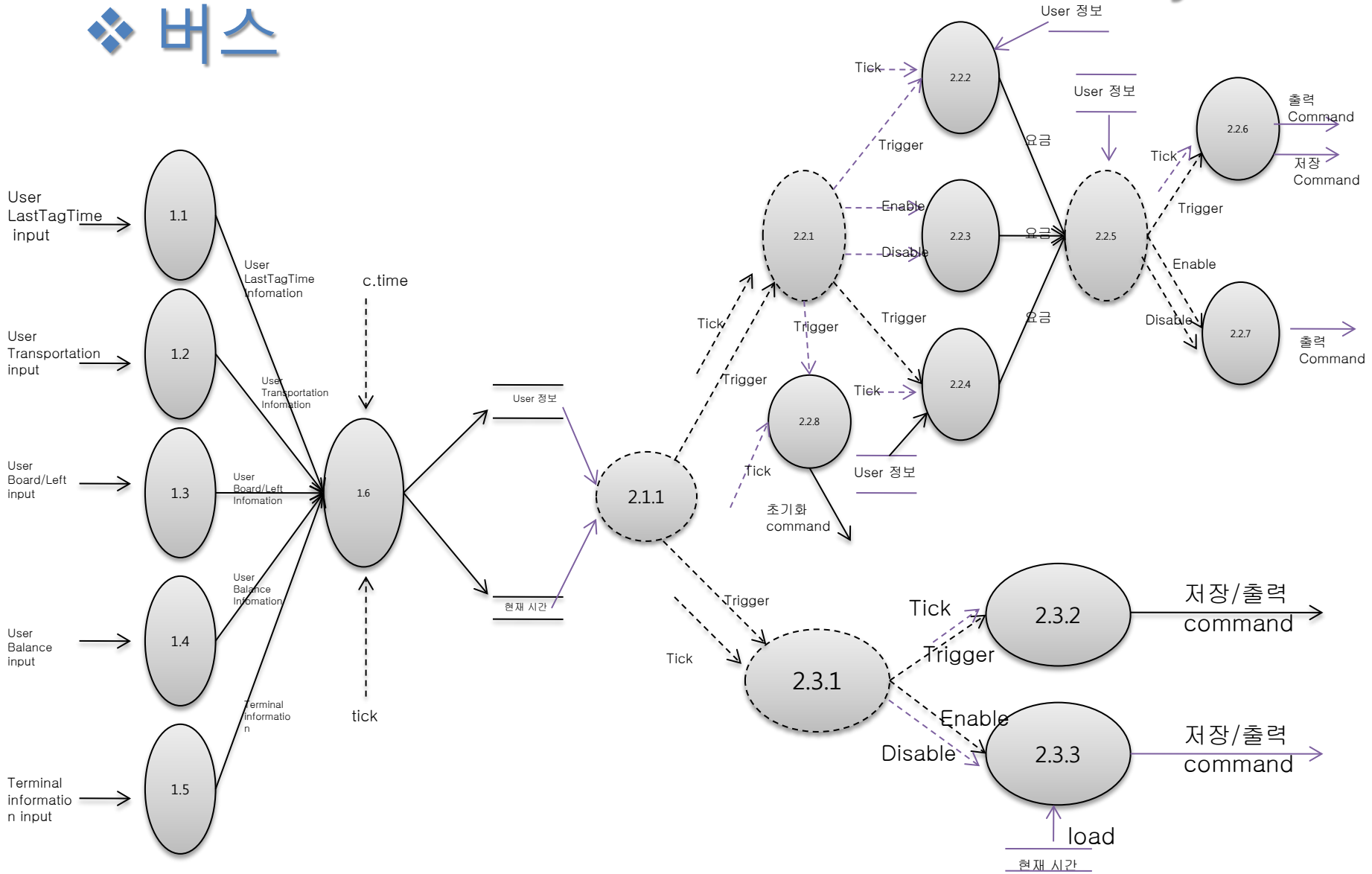


Structured Chart – PTS (Advanced)

지하철

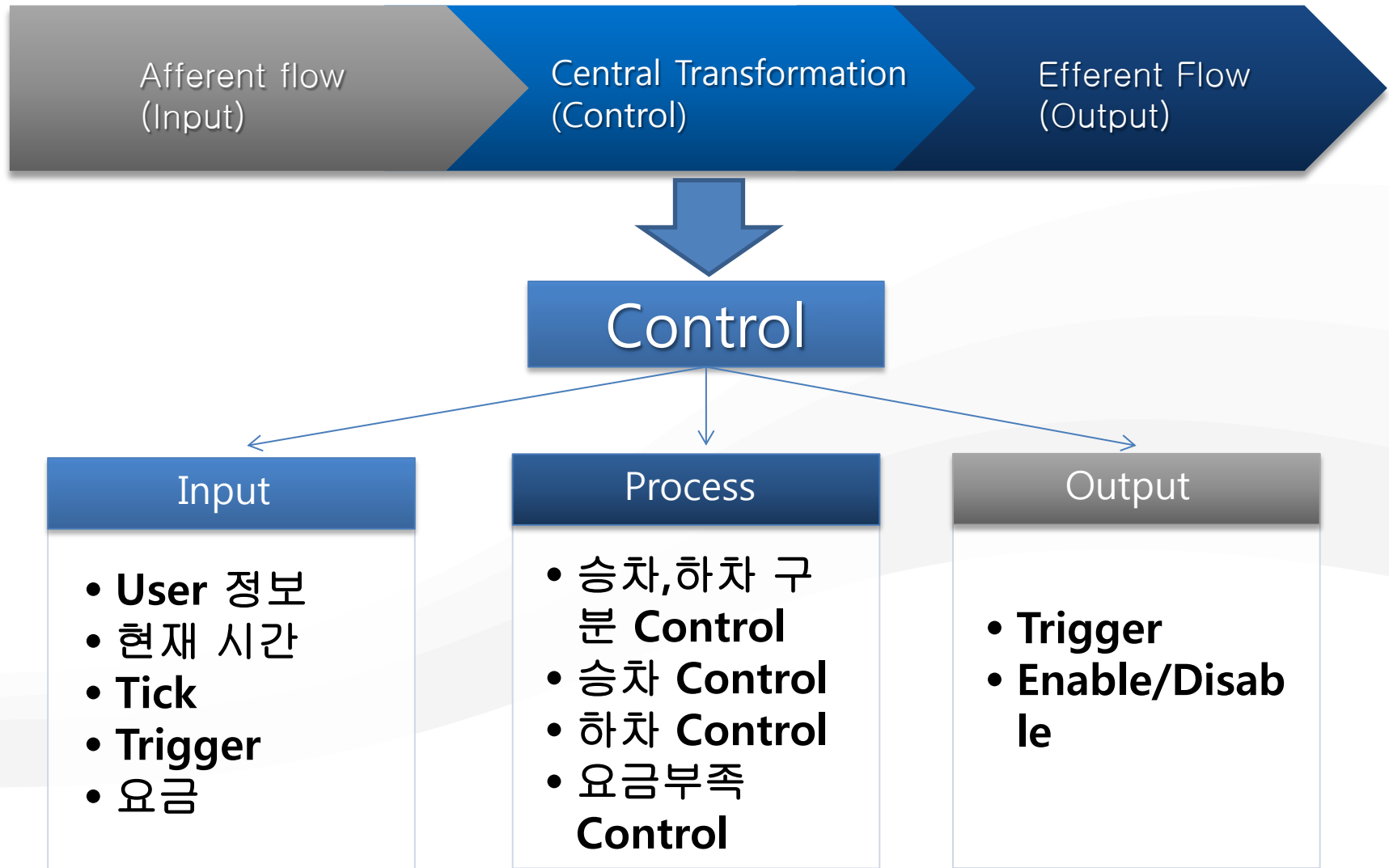


Structured Chart – Transform Analysis



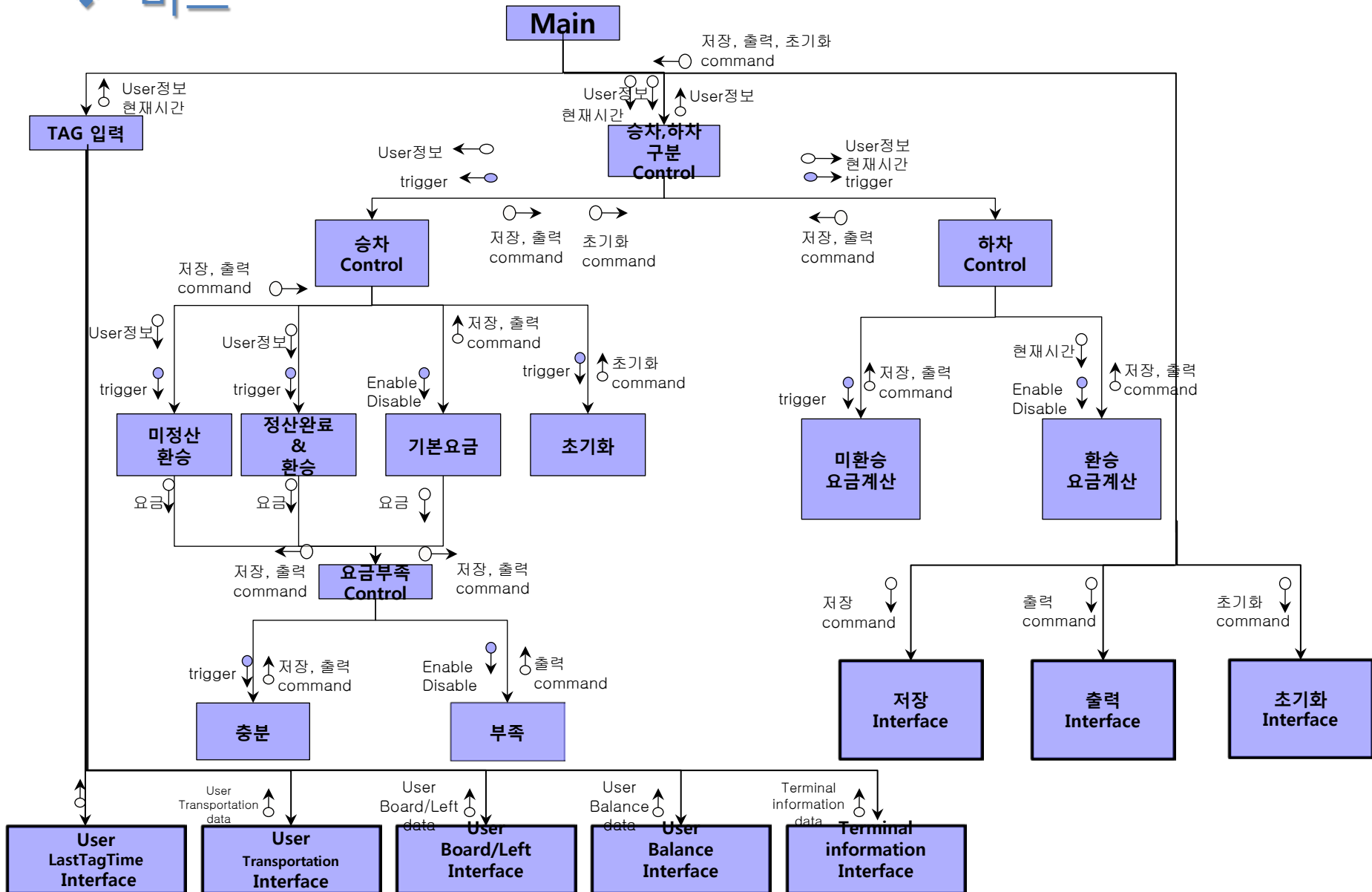
Structured Chart – Transform Analysis

❖ 버스



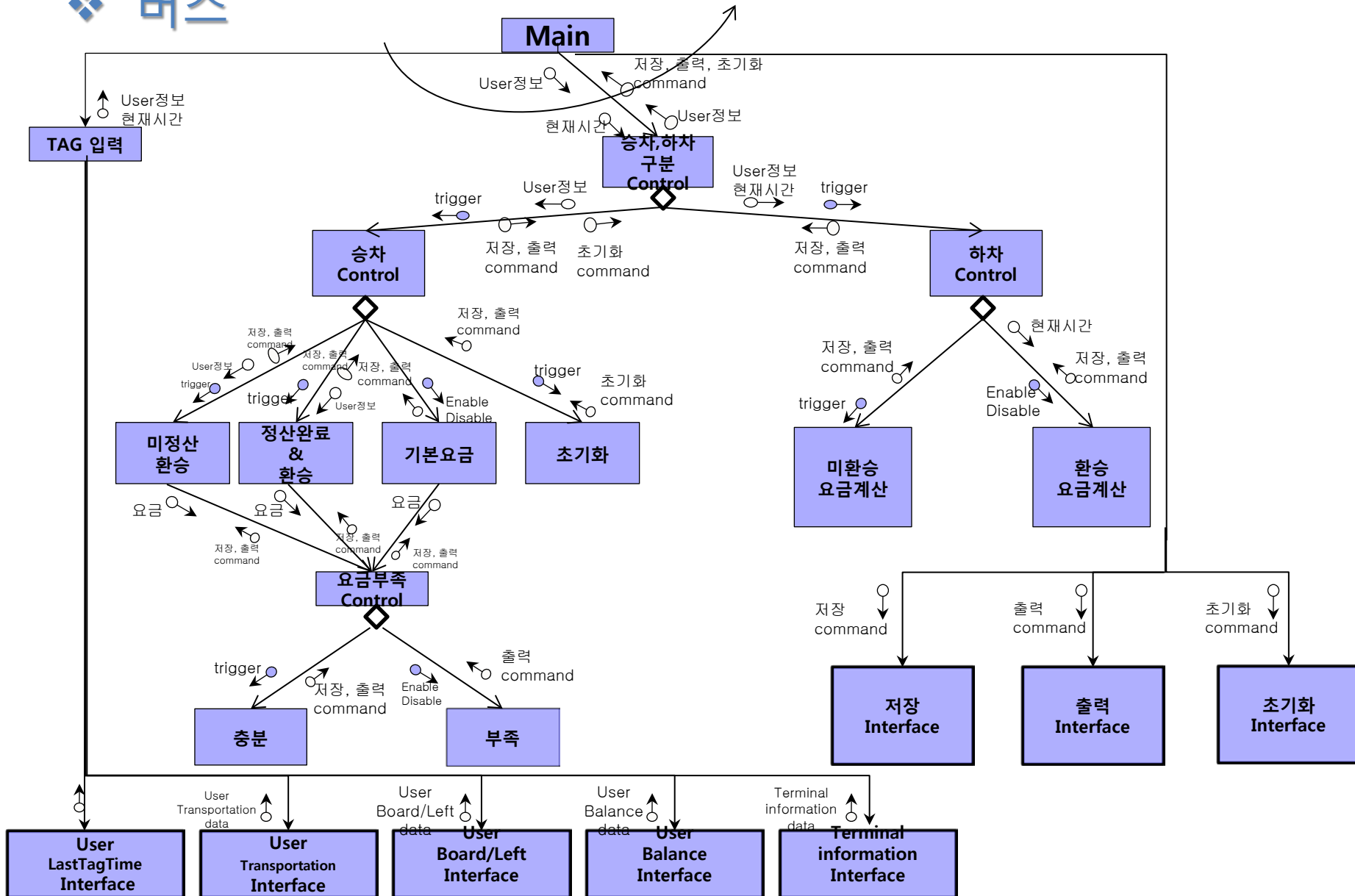
Structured Chart – PTS (Basic)

❖ 버스



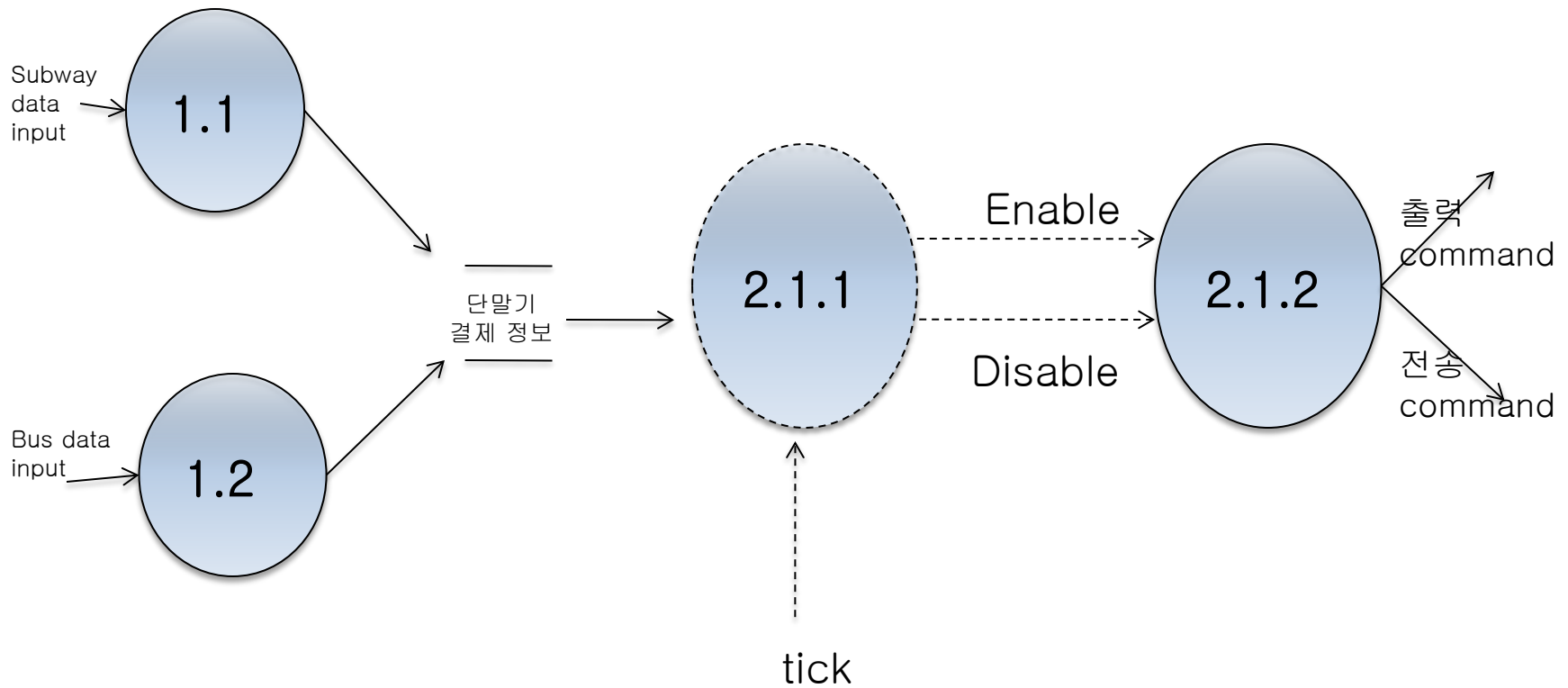
Structured Chart – PTS (Advanced)

❖ 버스



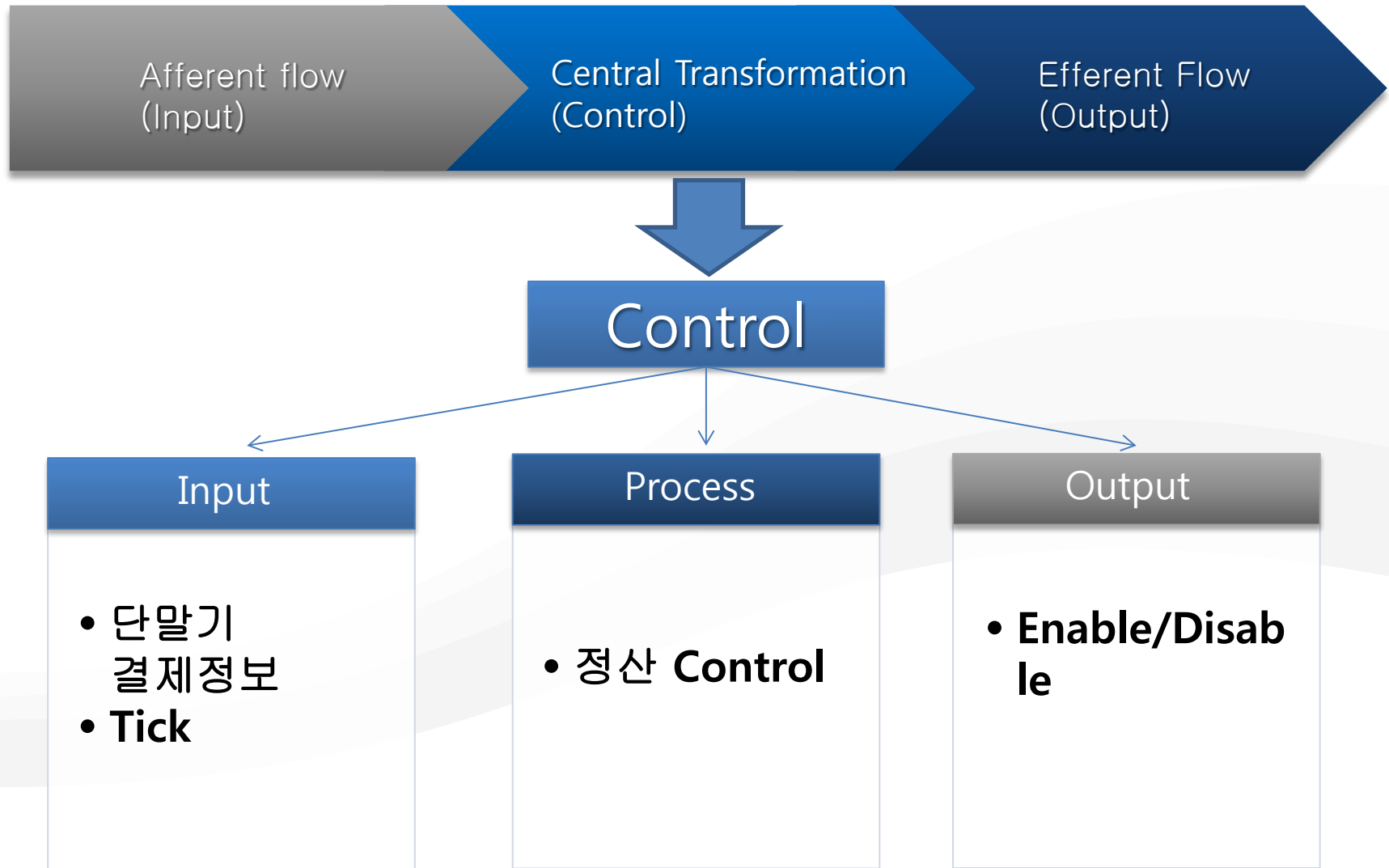
Structured Chart – Transform Analysis

❖ 정산



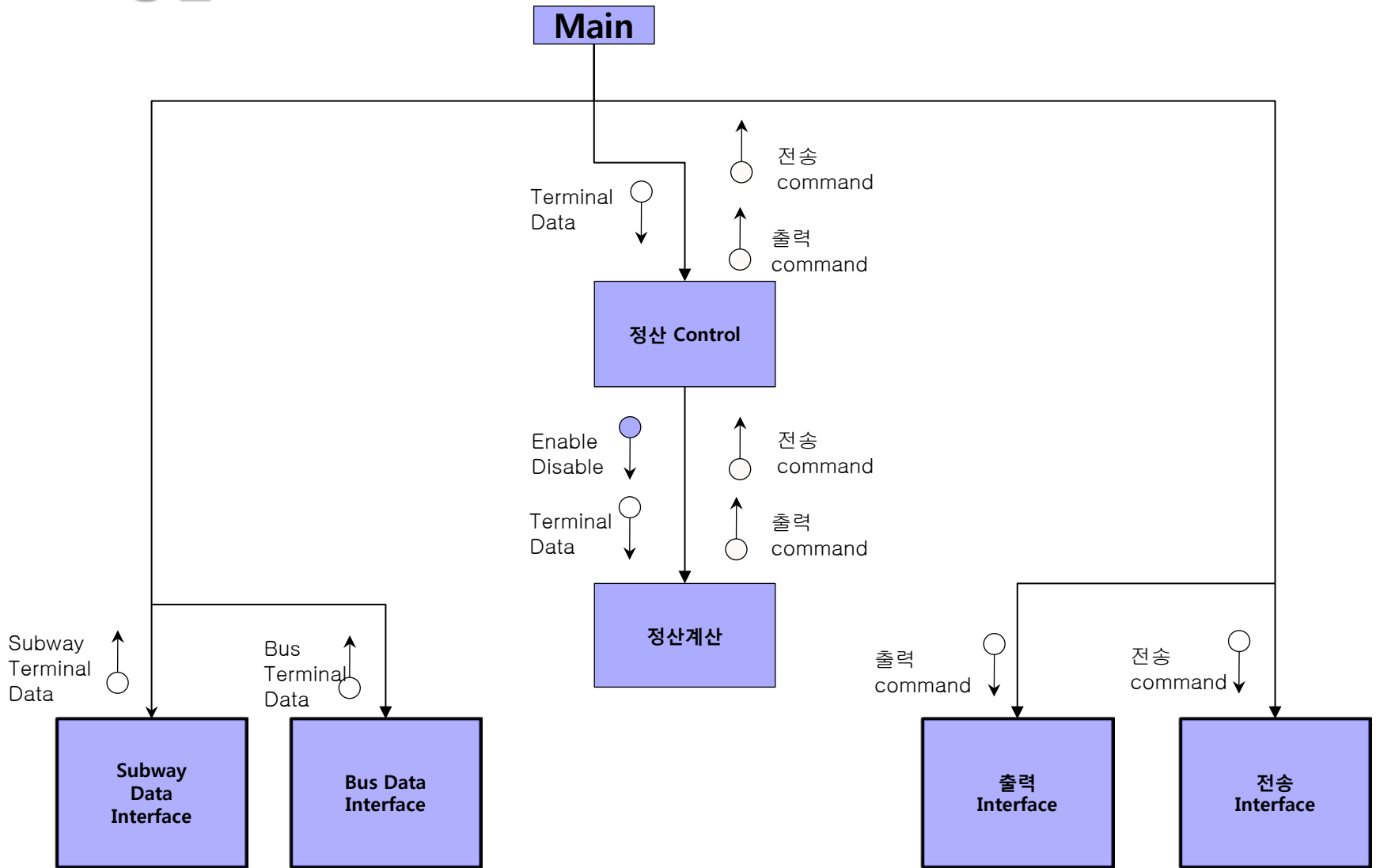
Structured Chart – Transform Analysis

❖ 정산



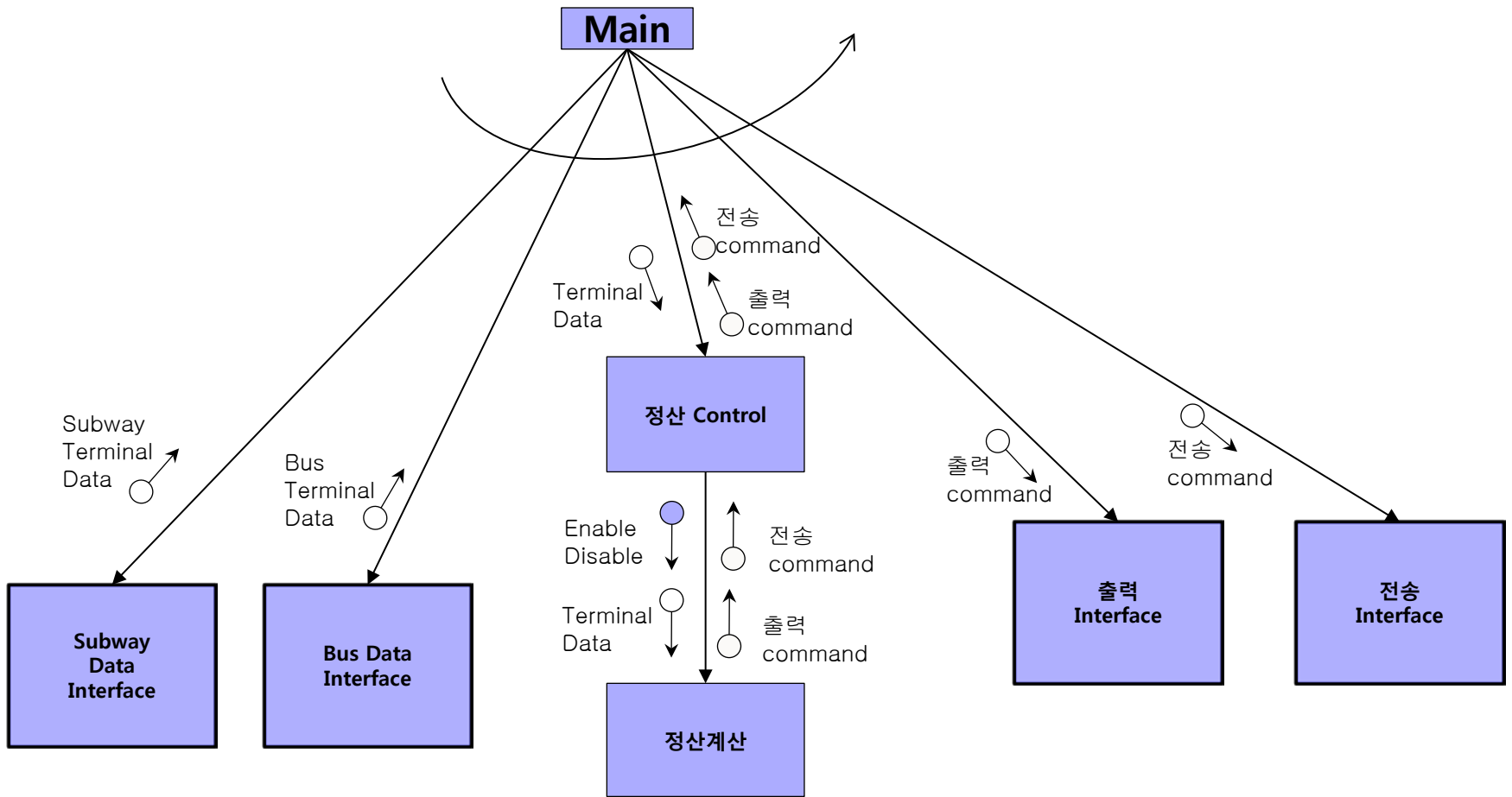
Structured Chart – PTS (Basic)

❖ 정산



Structured Chart – PTS (Advanced)

❖ 정산



THANK YOU
FOR YOUR ATTENTION

Any Questions ?